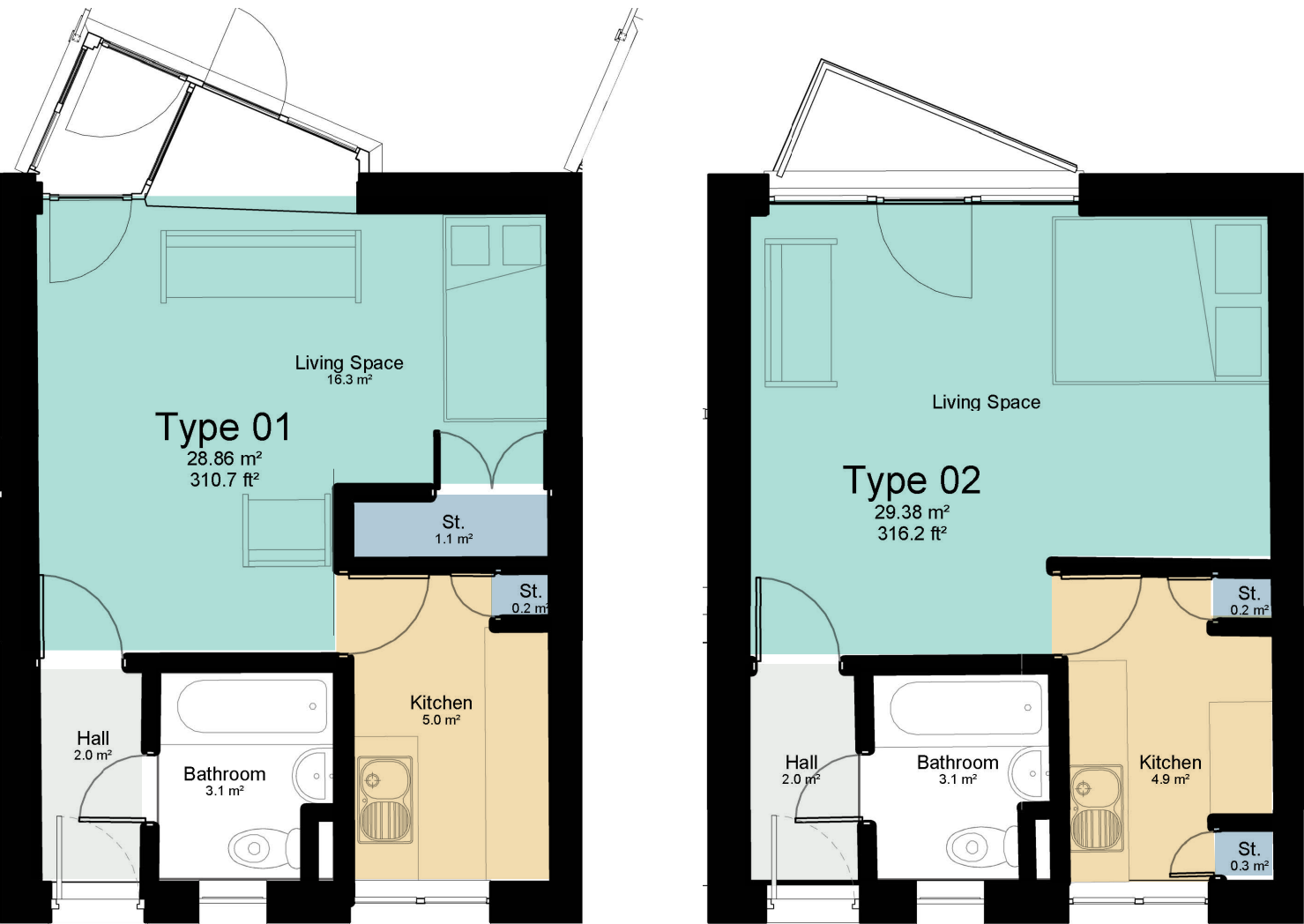


Examples of Studio Flat Layouts

This board provides a comparison of existing building types and potential new building types in relation to size, layout and private space.

Existing home layouts



Winch House - Studio (Ground Floor)

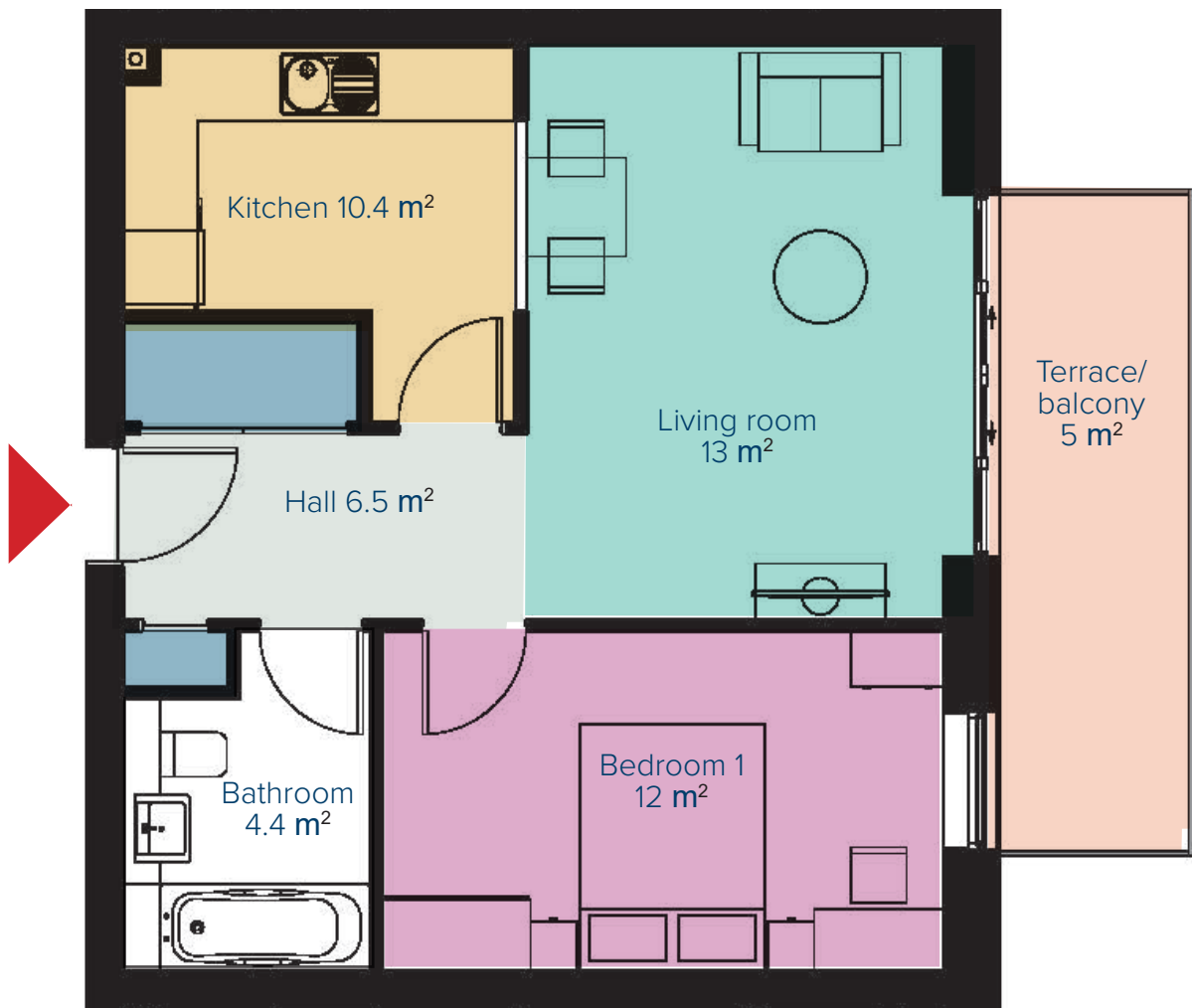
Total Area = 28.86 m²

Living Space = 16.3 m²	Hall = 2 m²
Kitchen = 5 m²	Storage = 1.3 m²
Bathroom = 3.1 m²	

Total Area = 29.38 m²

Living Space = 17.4 m²	Hall = 2 m²
Kitchen = 4.9 m²	Storage = 0.5 m²
Bathroom = 3.1 m²	

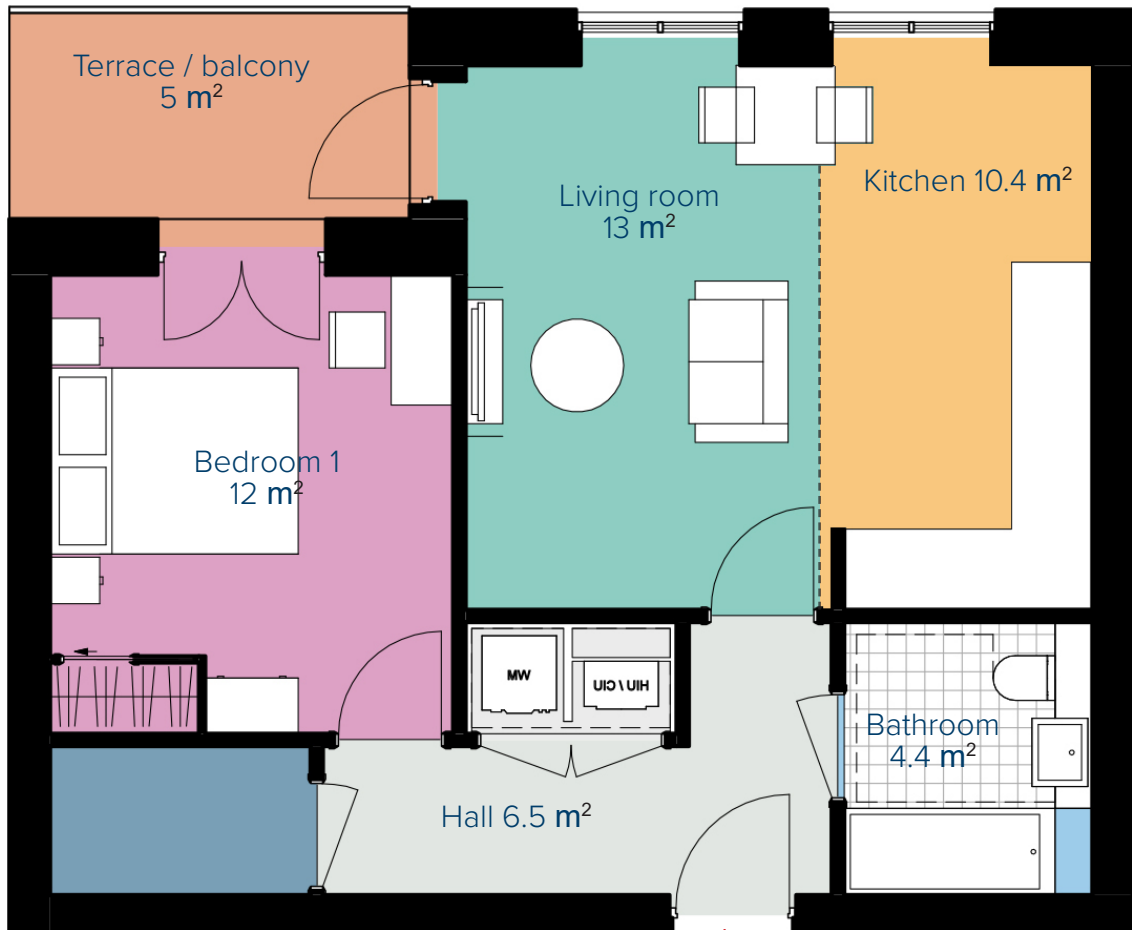
Examples of new home layouts



1B2P Example Layout

Total Area = 50 m² (+ Terrace/Balcony 5m²)

Living Room = 13 m²	Hall = 6.5 m²
Kitchen = 10.4 m²	Terrace/Balcony = 5 m²
Bedroom 1 = 12 m²	Storage = 1.5 m²
Bathroom = 4.4 m²	



1B2P Example Layout

Total Area = 50 m² (+ Terrace/Balcony 5m²)

Living Room = 13 m²	Hall = 6.5 m²
Kitchen = 10.4 m²	Terrace/Balcony = 5 m²
Bedroom 1 = 12 m²	Storage = 1.5 m²
Bathroom = 4.4 m²	

Examples of 1B Flat Layouts

This board provides a comparison of existing building types and potential new building types in relation to size, layout and private space.







Existing home layouts

Examples of new home layouts



Winch House - 1 bed (First Floor)







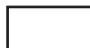
Total Area = 41.51 m²

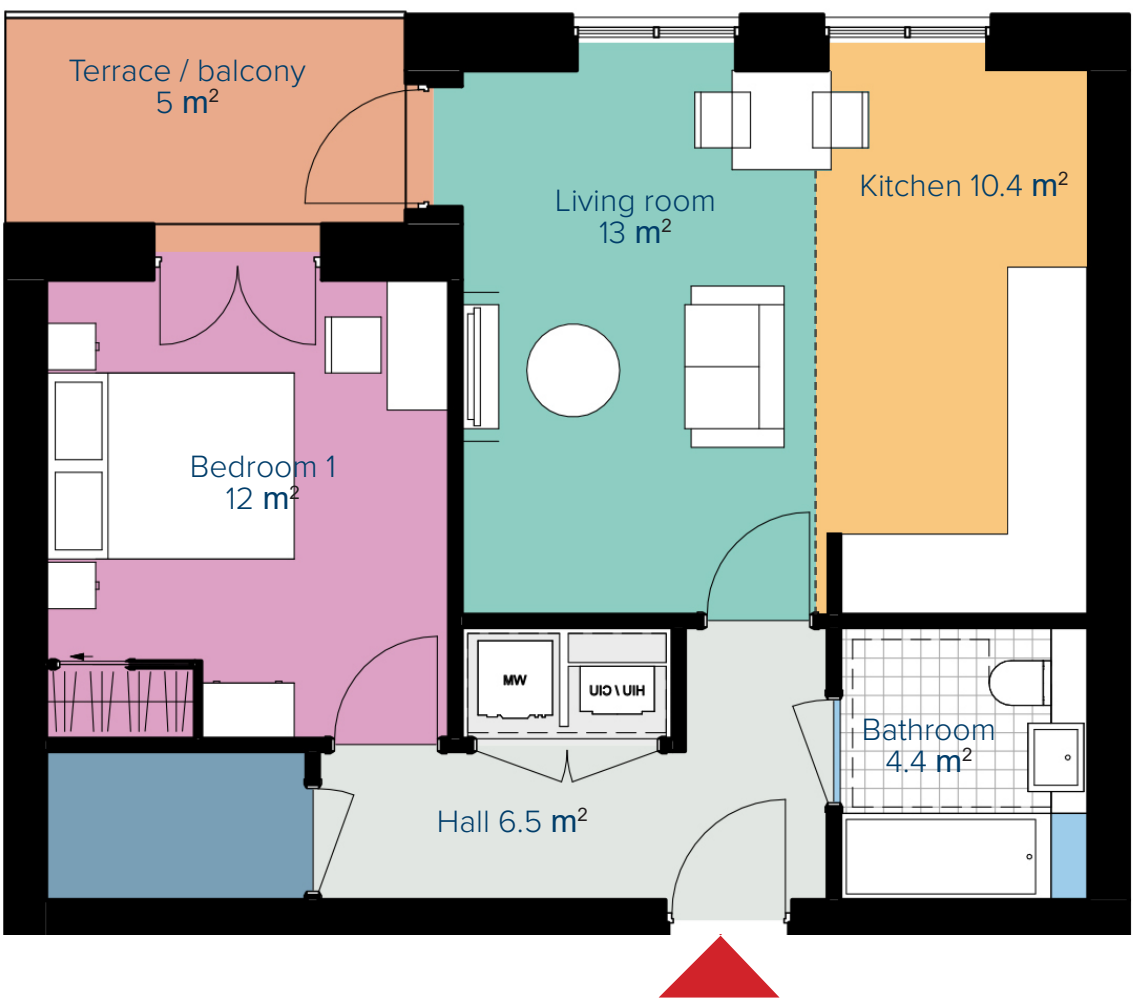
 Living Room = 14.9 m ²	 Bedroom 1 = 9.4 m ²
 Kitchen = 7.2 m ²	 Hall = 1.6 m ²
 Bathroom = 3.1 m ²	 Storage = 1.8 m ²



1B2P Example Layout







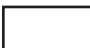
Total Area = 50 m² (+ Terrace/Balcony 5m²)

 Living Room = 13 m ²	 Hall = 6.5 m ²
 Kitchen = 10.4 m ²	 Terrace/Balcony = 5 m ²
 Bedroom 1 = 12 m ²	 Storage = 1.5 m ²
 Bathroom = 4.4 m ²	



1B2P Example Layout

Total Area = 50 m² (+ Terrace/Balcony 5m²)

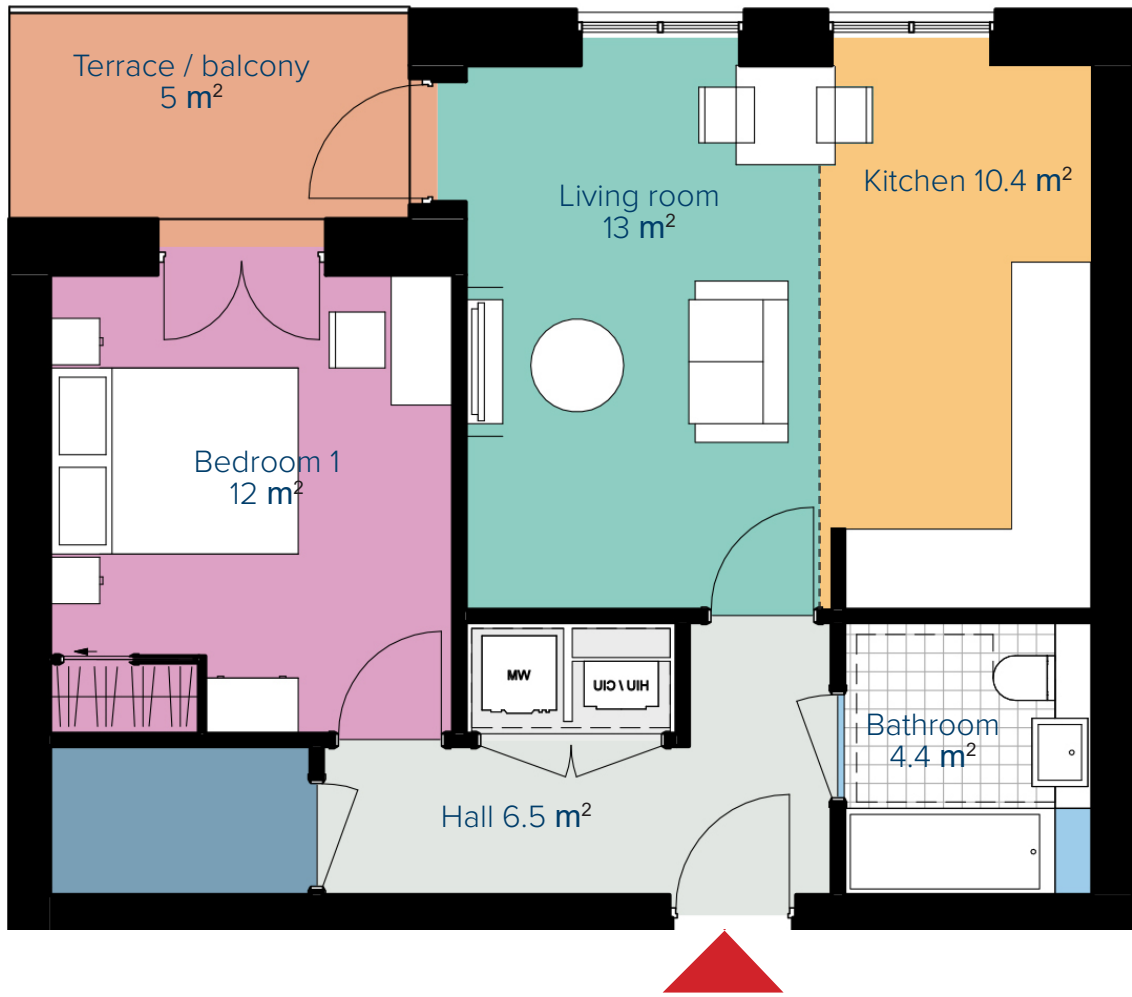
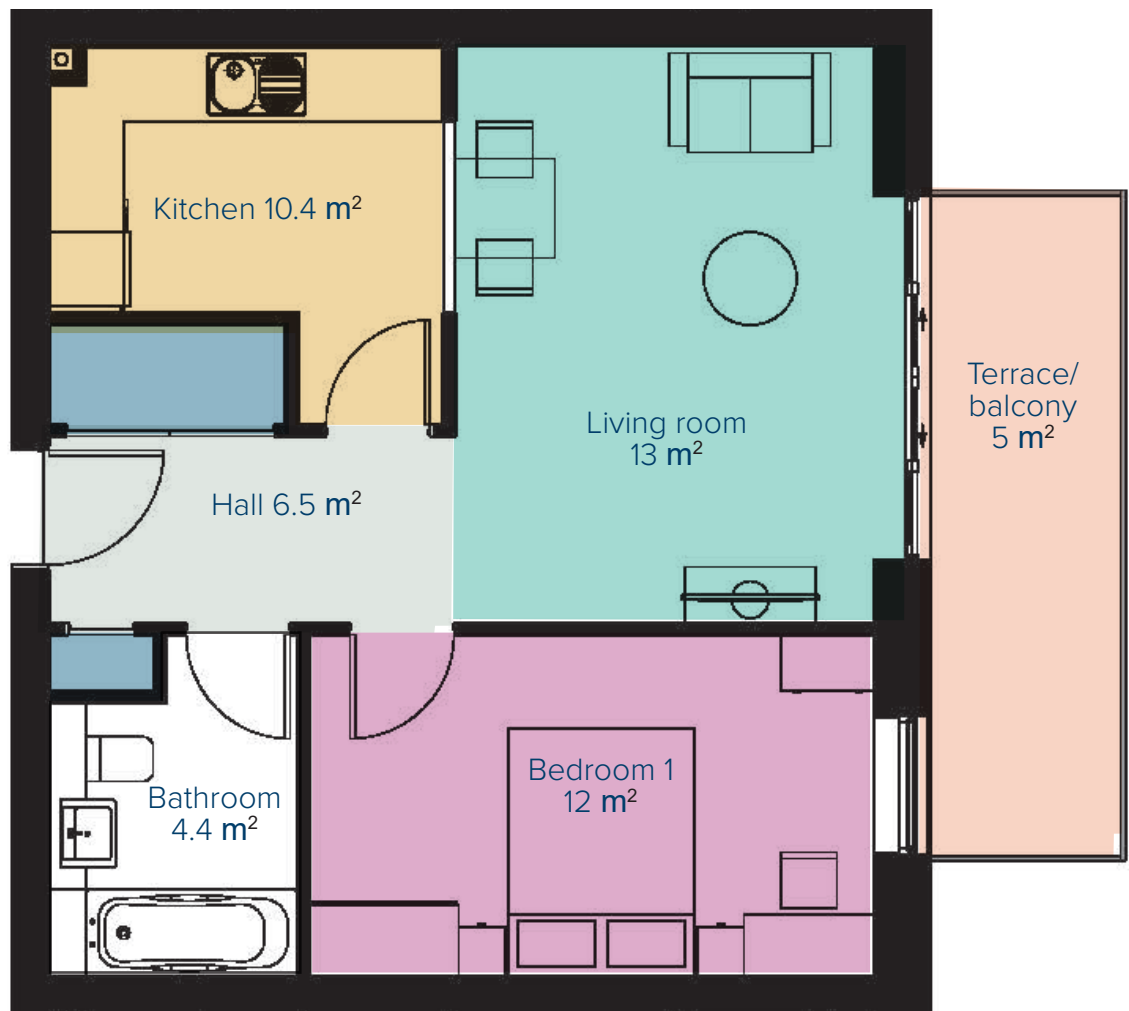
 Living Room = 13 m ²	 Hall = 6.5 m ²
 Kitchen = 10.4 m ²	 Terrace/Balcony = 5 m ²
 Bedroom 1 = 12 m ²	 Storage = 1.5 m ²
 Bathroom = 4.4 m ²	

Examples of 1B Flat Layouts

This board provides a comparison of existing building types and potential new building types in relation to size, layout and private space.



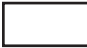



Existing home layouts

Examples of new home layouts










Kedge House - 1 bed

Total Area = 56.3 m²

 Living Room = 18 m ²	 Bedroom 1 = 9.7 m ²
 Bathroom = 2.8 m ² & 1.4 m ²	 Hall = 8.9 m ²
 Kitchen = 9 m ²	 Storage = 1.8 m ²








1B2P Example Layout

Total Area = 50 m² (+ Terrace/Balcony 5m²)

 Living Room = 13 m ²	 Hall = 6.5 m ²
 Kitchen = 10.4 m ²	 Terrace/Balcony = 5 m ²
 Bedroom 1 = 12 m ²	 Storage = 1.5 m ²
 Bathroom = 4.4 m ²	

1B2P Example Layout

Total Area = 50 m² (+ Terrace/Balcony 5m²)

 Living Room = 13 m ²	 Hall = 6.5 m ²
 Kitchen = 10.4 m ²	 Terrace/Balcony = 5 m ²
 Bedroom 1 = 12 m ²	 Storage = 1.5 m ²
 Bathroom = 4.4 m ²	

Examples of 2B Flat Layouts

This board provides a comparison of existing building types and potential new building types in relation to size, layout and private space.

Existing home layouts

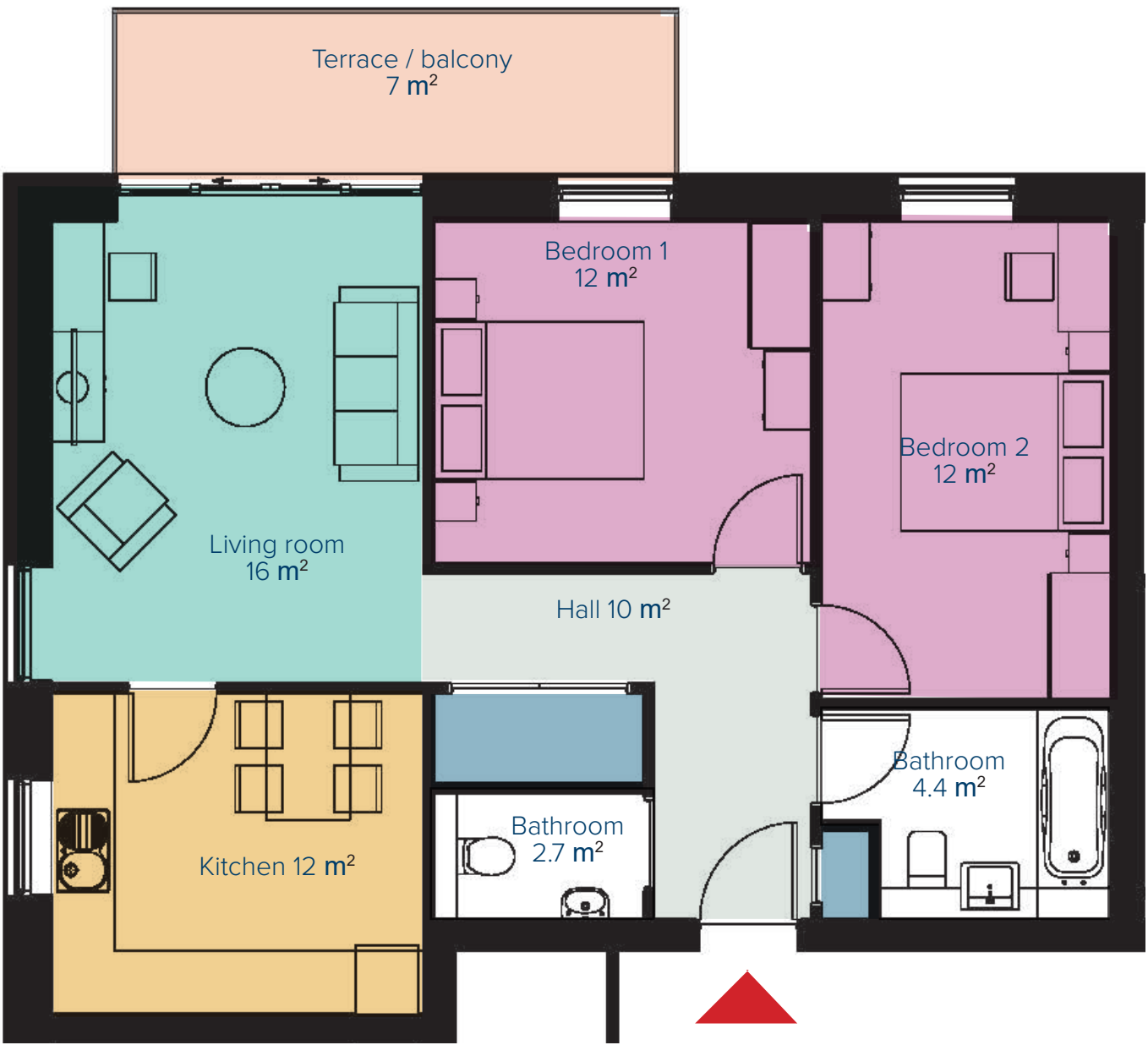


Kedge House - 2 bed

Total Area = 70.28 m²

Living Room = 18.6 m ²	Bedroom 1 = 13.2 m ²	Hall = 9 m ²
Kitchen = 9 m ²	Bedroom 2 = 10.3 m ²	Storage = 1.8 m ²
Bathroom = 2.9 m ² & 1.4 m ²		

Examples of new home layouts



2B4P Example Layout

Total Area = 74 m² (+ Terrace/Balcony 7m²)

Living Room = 16 m ²	Bedroom 3 = 12 m ²	Storage = 2.5 m ²
Kitchen = 12 m ²	Bathroom = 4.4 m ²	Bathroom = 2.7 m ²
Bedroom 1 = 12 m ²	Hall = 8.5 m ²	Terrace/Balcony = 7 m ²

Examples of 3B Flat Layouts

This board provides a comparison of existing building types and potential new building types in relation to size, layout and private space.

Existing home layouts



Kedge House - 3 bed

Total Area = 84.28 m²

Living Room = 18.8 m ²	Bedroom 1 = 13 m ²	Hall = 11.3 m ²
Kitchen = 8.8 m ²	Bedroom 2 = 10.3 m ²	Storage = 2.4 m ²
Bathroom = 2.8 m ² & 1.4 m ²	Bedroom 3 = 10.1 m ²	

Examples of new home layouts



3B6P Example Layout

Total Area = 95 m² (+ Terrace/Balcony 9m²)

Living Room = 18 m ²	Bedroom 3 = 11.5 m ²	Storage = 4.5 m ²
Kitchen = 12.5 m ²	Bathroom = 6.8 m ²	Bathroom = 3.6 m ²
Bedroom 1 = 12 m ²	Hall = 10.5 m ²	Utility = 3.6 m ²
Bedroom 2 = 11.5 m ²	Terrace/Balcony = 9 m ²	

Examples of 3B Flat Layouts

This board provides a comparison of existing building types and potential new building types in relation to size, layout and private space.

Existing home layouts

Examples of new home layouts



Starboard Way - 3 bed Maisonette

Total Area = 88.47 m²

Living Room = 16.2 m ²	Bedroom 1 = 10.1 m ²	Hall = 16.8 m ²
Kitchen = 12.3 m ²	Bedroom 2 = 11.4 m ²	Storage = 1.4 m ²
Bathroom = 2.4 m ² & 1.4 m ²	Bedroom 3 = 7.1 m ²	Utility = 3.4 m ²



3B6P Example Layout

Total Area = 103 m² (+ Garden / Terrace 9m²)

Living Room = 20 m ²	Bedroom 3 = 11 m ²	Storage = 2 m ²
Kitchen = 12 m ²	Bathroom = 6.8 m ²	Bathroom = 3.6 m ²
Bedroom 1 = 12 m ²	Hall = 20 m ²	Utility = 3.6 m ²
Bedroom 2 = 12 m ²	Garden / Terrace = 9 m ²	

Examples of 4B Flat Layouts











This board provides a comparison of existing building types and potential new building types in relation to size, layout and private space.

Existing home layouts



Starboard Way - 4 bed Maisonette

Total Area = 94.88 m²













 Living Room = 16.4 m ²	 Bedroom 2 = 11.4 m ²	 Hall = 15 m ²
 Kitchen = 8.5 m ²	 Bedroom 3 = 6.9 m ²	 Storage = 0.5 m ²
 Bathroom = 3.8 m ²	 Bedroom 4 = 11.3 m ²	 Utility = 3.3 m ²
 Bedroom 1 = 11 m ²		

Examples of new home layouts`



4B7P Example Layout

Total Area = 115 m² (+ Garden / Terrace 10m²)

 Living Room = 20 m ²	 Bedroom 3 = 11.5 m ²	 Storage = 3 m ²
 Kitchen = 15 m ²	 Bedroom 4 = 8 m ²	 Bathroom = 3.6 m ²
 Bedroom 1 = 12 m ²	 Bathroom = 6.8 m ²	 Utility = 1.5 m ²
 Bedroom 2 = 11.5 m ²	 Hall = 18 m ²	 Garden / Terrace = 10 m ²